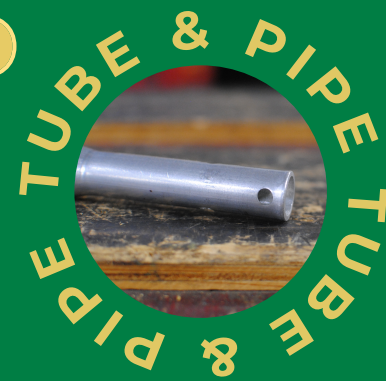
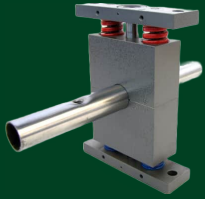


TP SERIES LINEUP



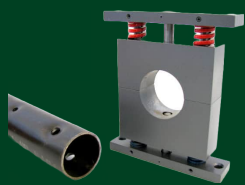
TP-1 1/4, TP-2-3/8, TP-2, TP-2M

- Punch round and shaped tubing
- Punch both sides of tube, or just one side
- Punch "dimpled" or deformation holes



TP-1 1/4 TUBE & PIPE PUNCHING UNIT

The TP-1 1/4 unit provides two sided punching in round or square tubes. The TP-1 1/4 is designed for punching tube diameters from 9/16" O.D. (14.3mm) to 1 1/4" O.D. (31.75mm) round or square. Each assembly top and bottom contains a punch to pierce two holes in-line on each side of the tube. The tubing is supported on all sides during punching. If only one hole is desired, the removal of the bottom punch accommodates this option. Depending on your material thickness, punch diameters are available from .0937" (2.38mm) to .500" (12.7mm).



TP-2 3/8 TUBE & PIPE PUNCHING UNIT

The TP-2 3/8 unit provides two sided punching in round or shaped tubes. The unit is designed for punching tube diameters from 1 5/16" O.D. to 2 3/8" O.D. Each assembly top and bottom contains a punch to pierce one hole in-line on each side of the tube. The tubing is supported on all sides during punching. If only one hole is desired, simply remove one of the punches. Depending on your material thickness, standard punch diameters are available from .0937" to .500" (12.7mm).



TP-2 TUBE & PIPE PUNCHING UNIT

The TP-2 unit provides straight through holes with one punch in round or shaped tubing. The unit is designed for punching tube diameters from 9/16" O.D. to 1" O.D. The tubing is supported on all sides during punching. The top hole is dimpled; the bottom hole is punched into a die, providing a dimple free hole. (UniPunch offers custom mandrel style punching units for dimple free holes. See TP-2M.) Depending on your material thickness, punch diameters are available from .0937" to .4375".



TP-2M UNIT MANDREL TUBE PUNCHING

The TP-2M mandrel style unit provides dimple-free holes in round, square or rectangular tube or pipe. The unit is designed for punching tube sizes up to 1", and each unit is designed for the particular hole size and tubing application. Depending on your material thickness, standard punch diameters are available up to .4375".



TP-AE UNIT MANDREL TUBE PUNCHING

The TP-AE mandrel unit provides dimple-free holes near the end of round or shaped tube or pipe. Maximum hole size or shape depends on tube size and material wall thickness. The unit can also be used for notching or slitting the end of the tube.

CONTACT UNIPUNCH TO LEARN MORE ABOUT PUNCHING PARTS FAST

1-800-828-7061

WWW.UNIPUNCH.COM

INFO@UNIPUNCH.COM

TP

-2 3/8"

Dia./Square Max.

SPECIFICATIONS & OPERATING INSTRUCTIONS

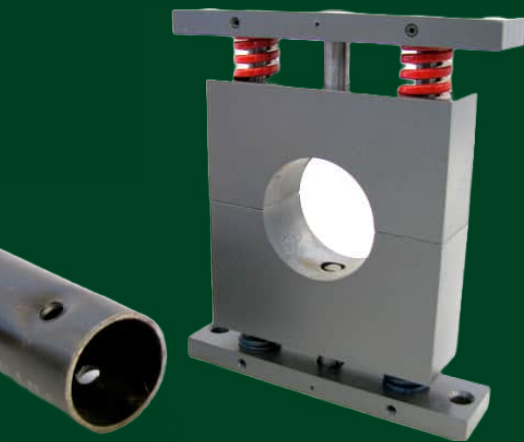
- MAX. SHUT HEIGHT: 6-3/4" (171.4mm)
- MIN. SHUT HEIGHT: 6-5/8" (168.3mm)
- MAX. TUBE SIZE: 2-3/8" O.D. (60.3mm) round or square
- MIN. TUBE SIZE: 1-5/16" O.D. (33.3mm) round or square
- MAX. WALL THICKNESS (MILD STEEL): .125" (3.18mm)
- MIN. WALL THICKNESS: .031" (.79mm)
- MAX. HOLE DIAMETER: .500" (12.7mm)

* For shaped holes, contact UniPunch Sales Department

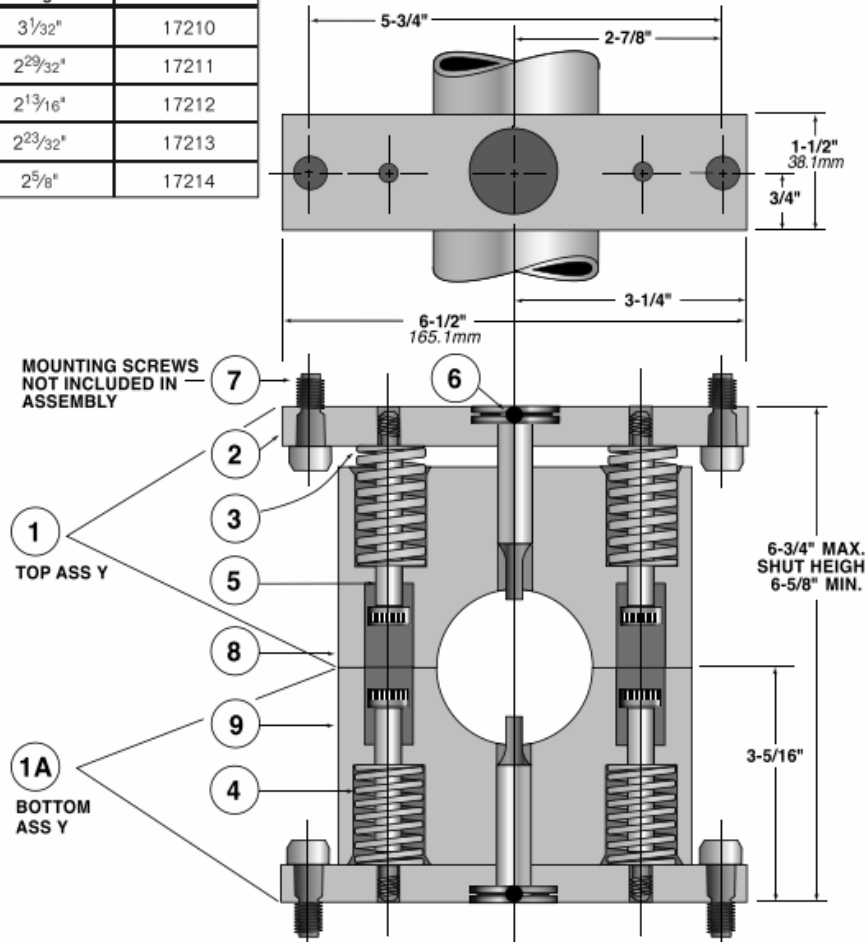
TO ORDER, SPECIFY:

- Size of Tube
- Hole Diameter
- Wall Thickness
- Type of Material

* Because there is no die to support the tube at the site of the hole, tubes distort when punching. Distortion varies depending on punch size, tube O.D., wall thickness, and material type.



PUNCH SELECTION CHART		
Tube O.D.	Punch Length	Part No.
1 5/16" to 1 7/16"	3 1/32"	17210
1 1/2" to 1 5/8"	2 29/32"	17211
1 11/16" to 2"	2 13/16"	17212
2 1/16" to 2 3/16"	2 23/32"	17213
2 1/4" to 2 3/8"	2 5/8"	17214



Item	Description	FOR ROUND TUBES UP TO 2.375" O. D.	FOR SQUARE TUBES UP TO 2.375" SQ.
		Part No.	Part No.
	Complete Unit (Includes Top & Bottom Punches)	17202	17302
1	Top Ass'y (Includes Punch)	17223	17323
1A	Bottom Ass'y (Includes Punch)	17224	17324
2	Punch Plate	17272	17272
3	Top Stripping Spring (Red) (2 Req'd)	17140	17140
4	Bottom Stripping Spring (Blue) (2 Req'd)	17160	17160
5	Stripper Bolt (2 Per Ass'y)	17139	17139
6	Roll Pin (1/8" Dia. x 3/16")	91679	91679
7	Mounting Screw (3/8"-16 x 1" S.H.C.S.)	91027	91027
8	Top Stripping Guide Only (Specify Tube O.D.)	17262	17362
9	Bottom Stripping Guide Only (Specify Tube O.D.)	17263	17363

CONTACT UNIPUNCH TO LEARN MORE ABOUT PUNCHING PARTS FAST

1-800-828-7061

WWW.UNIPUNCH.COM

INFO@UNIPUNCH.COM