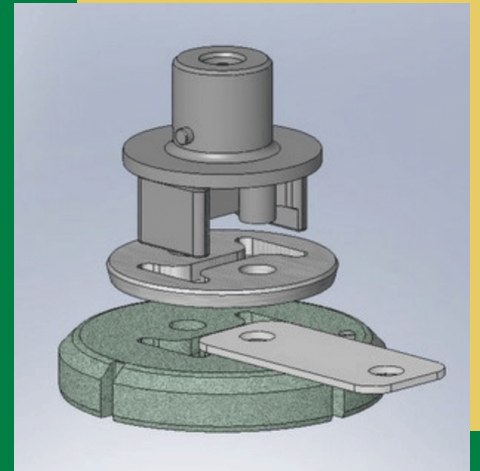


TRIM & PART

TOOLING IS USED TO CUT A FLAT STRIP OF MATERIAL INTO TWO PIECES AND ROUND THE END OF EACH PART AT THE SAME TIME

Trim and part tooling is supplied with 2 heels to prevent side loading when punching. Dies can be supplied with a gauging system to help guide the part thru the unit. In addition to cut-off applications, UniPunch also provides tooling to trim, part and punch within the same c-frame unit. Trim and part tooling is commonly used for cut-off applications where a rounded end of the part is required.



CONTACT UNIPUNCH TO LEARN MORE ABOUT PUNCHING PARTS FAST

1-800-828-7061

WWW.UNIPUNCH.COM

INFO@UNIPUNCH.COM